



SHEERFILL®

Teatro Biobío / Concepcion, Chile



SHEERFILL® ARCHITECTURAL MEMBRANES

FOR FAÇADE AND SHADING APPLICATIONS



SAINT-GOBAIN

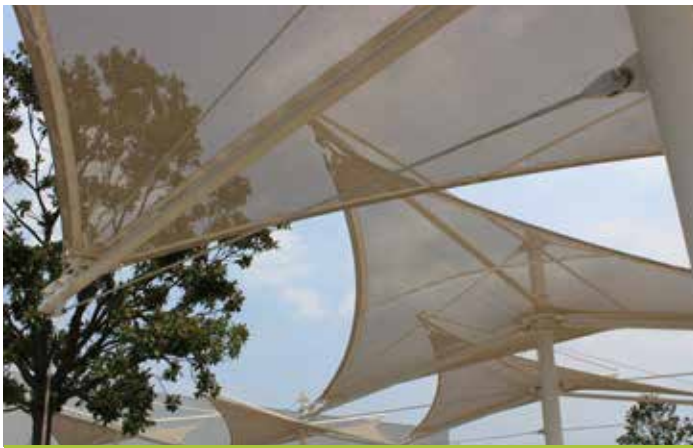
Angie-McMonigal Photography, Courtesy of Structurflex



Northwestern University Visitor Center parking garage with SHEERFILL V



Magical Spain with SGM-30

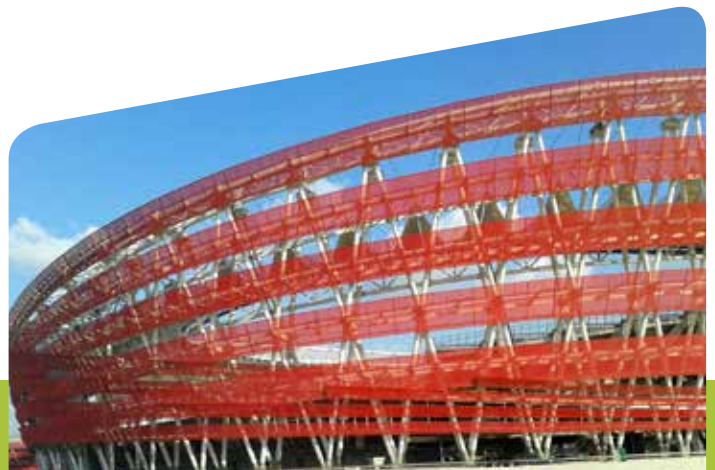


Shade structure with SGM-30

As the “face” presented to the world, the façade of any building is an expression of its owner and occupants. Today, it is also much more — it is an integral part of efforts to improve the comfort of the occupants while reducing energy consumption.

SHEERFILL® mesh and architectural fabrics enable the implementation of unique and creative façades that enhance the comfort of occupants of the building by reducing solar heat gain while allowing for visibility and air flow through the façade. These materials also reduce cooling loads through shading while allowing natural, diffused daylight into the space, which helps minimize daylighting costs.

SHEERFILL mesh and architectural fabrics are engineered for high-performance shading applications, including custom façades, modular façades, architectural umbrellas and more. SHEERFILL is synonymous with long life, energy efficiency, safety and freedom of design and iconic structures.



Panjin Stadium with SGM-30 Red



LOW LIFECYCLE COST

SHEERFILL architectural membranes have been used since the early 1970s in structures and applications of many shapes and sizes. These PTFE-coated fiberglass fabrics have proven to last 30 years or more, require no retensioning after installation, are easily cleaned — most often rinsed clean by rain — and are available with EverClean® Photocatalytic Topcoat for a truly self-cleaning surface.



ENERGY EFFICIENCY

As its name implies, SHEERFILL architectural membranes are used primarily to provide shade to the occupants within a structure or under the membrane in an outdoor setting. Shading reduces cooling loads and the openness of the SGM allows for air circulation through and around the fabric. In addition, by allowing diffuse natural light through the fabric, daylighting requirements can be reduced significantly.



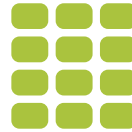
SAFETY

All SHEERFILL membranes provide exceptional fire safety performance. Since these materials are non-combustible and generate extremely low smoke in case of fire, they are ideal for any structure in which the safety of building occupants is a priority. This feature is not gained through addition of any chemical or agent, but is rather inherent in the materials of the PTFE fiberglass composite.



COLORS

SHEERFILL SGM Saint-Gobain now offers in several standard colors, including natural (beige that will bleach to white in the sun), silver and black. Custom colors are available.



THE MATERIALS

SHEERFILL architectural membranes are composed of woven fiberglass coated with PTFE (TEFLON®). Saint-Gobain's standard offering of these fabrics is shown in the table. This range of materials can address common needs for light translucency, open area and strength. By using various weave styles, yarn densities and coating compositions, these materials are engineered to meet the needs of the vast majority of applications and uses for façade and shading applications.



FREEDOM OF DESIGN

SHEERFILL allows for freedom of design not possible with traditional materials. Whether as a shade accent on a commercial building or an artistic and functional wrap on a football stadium, a unique statement is possible with each implementation of SHEERFILL membranes.



ICONIC STRUCTURES

The SHEERFILL family of products has enabled the realization of many unique and iconic structures — large and small — since the early 1970's. With SHEERFILL, the possibilities are limited only by the imagination!

To learn more, contact
sheerfill@saint-gobain.com
or go to www.sheerfill.com



@SHEERFILL



Test Protocol: ASTM

	Weight (oz./sq. yd.)	Breaking Strength W (lbs./in.)	Breaking Strength F (lbs./in.)	Tear Strength W (lbs.)	Tear Strength F (lbs.)	Open Area (%)	Light Transmission (%)
SHEERFILL V	30	550	600	40	60	0	16
SGM-30	21	675	500	100	100	20	34
SGM-30 PB	20	450	450	70	70	20	37
SGM-30 Colors	23	650	500	100	100	20	28
SGM-50	16.5	600	425	75	75	50	55
SGM-50 Colors	18	600	425	75	75	50	55
SGM-70	13	400	300	50	50	70	70

Test Protocol: DIN

	Weight (g/m ²)	Breaking Strength W (N/5 cm)	Breaking Strength F (N/5 cm)	Tear Strength W (N)	Tear Strength F (N)	Open Area (%)	Light Transmission (%)
SHEERFILL V	1015	4,555	5,160	100	200	0	16
SGM-30	700	5,000	4,500	600	600	20	34
SGM-30 PB	680	3,000	3,000	300	300	20	35
SGM-30 Colors	760	4,500	3,700	400	400	20	28
SGM-50	550	4,000	3,500	300	300	50	55
SGM-50 Colors	625	4,000	3,500	300	300	50	50
SGM-70	440	2,500	2,200	200	200	70	70

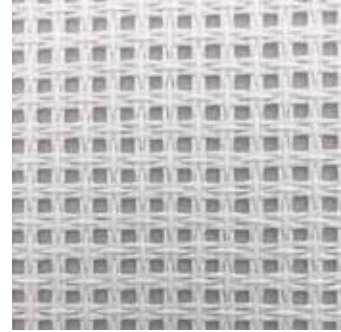
Breaking strength and tear strength are minimum average values. All other property values are nominal and are provided for guidance purposes. · Values listed are for virgin roll goods only. Appropriate industry safety factors need to be used to account for the in-service effects of handling, weathering, etc.· PB is for "pre-bleached" material, shipped from the factory as off-white; intended for use in areas where limited sunlight would delay UV bleaching.



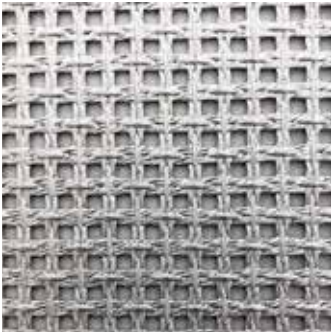
SHEERFILL V



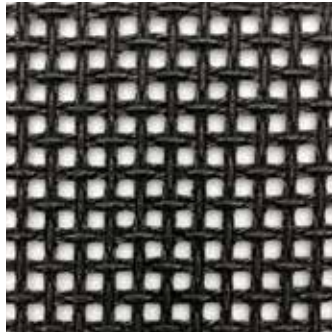
SGM-30



SGM-30 PB



SGM-30 SILVER



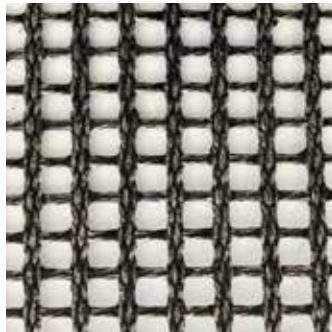
SGM-30 BLACK



SGM-50



SGM-50 SILVER



SGM-50 BLACK



SGM-70

Above photos are representations of product and should not be used for design or color-matching purposes. Most products are available with an EverClean Photocatalytic Topcoat. Standard width for all products is 150" (3.81 m). Custom widths and colors are available; please consult the factory for more information.

with
EverClean


SHEERFILL®

THE NAME BEHIND THE LANDMARKS



ONE OF THE

100

MOST INNOVATIVE
COMPANIES
IN THE WORLD

SAINT-GOBAIN PERFORMANCE PLASTICS

701 Daniel Webster Highway Merrimack,
New Hampshire, USA 03054
+1 (603) 420-1250
sheerfill@saint-gobain.com

PRESENCE IN
66
COUNTRIES

945
PRODUCTION
SITES

8
MAJOR R&D
CENTERS

1 IN 4
SAINT GOBAIN
PRODUCTS SOLD
TODAY WAS
DEVELOPED IN THE
LAST FIVE YEARS

 @SHEERFILL

SHEERFILL® is a registered trademark of Saint-Gobain Performance Plastics. Teflon® is a registered trademark of Chemours. ©2020 Saint-Gobain Performance Plastics